



Job description

Job title	Plant Fitter
Department	Engineering Department
Reports to	Workshop Manager
Financial sign-off limit	N/A

Position summary

Main job functions

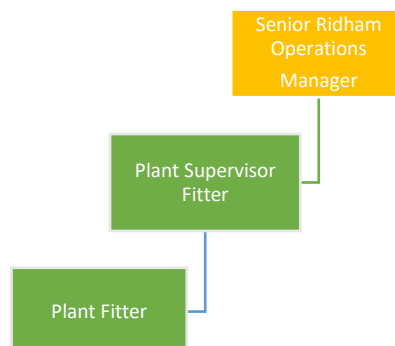
To achieve, and persistently maintain, high standards of workmanship and competence in performing tasks associated with preventative maintenance checks and general maintenance whilst maintaining high standards of internal and external communications and relationships.

Note: in addition to these functions, employees are required to carry out such other duties as may reasonably be required.

Job location

Ridham

Supervisory responsibilities/position in structure



Main duties – principle responsibilities

Duties/responsibilities (in order of priority)	Approximate % of time to be spent
Carry out inspections, diagnosing any faults and defects on Plant Equipment, related equipment and components. This includes testing, dismantling, overhauling, repairing, and re-assembling as required.	



Participates in supporting operatives and employees in preventative maintenance checks, services and general maintenance/repairs of Plant Equipment, related equipment and components.	
Perform emergency call out repairs as required.	
Participate and support in planned maintenance shutdowns.	
Ensure that all work done by the team is carried in line with the safe systems of work and that appropriate PPE and safety equipment is used at all times.	
Accurately complete the necessary paperwork in a timely manner as required to comply with the Countrystyle policies and procedures.	
Comply with all Health, Safety, HR and Environmental policies and procedures.	
Staff have a duty to take care of their own health and safety and that of others who may be affected by their actions at work.	
Staff must co-operate, report unsafe conditions and comply with the company management systems and safe systems of work as well as co-workers to help everyone meet their legal requirements.	

The above list is not exhaustive and the post holder will be required to undertake such tasks as may reasonably be expected within the scope and grading of the post. Job descriptions are regularly reviewed to ensure they are an accurate representation of the post.



Person specification

Skills

The post holder will require a certain level of these skills in order to carry out the role.

Essential	Desirable
Good Communication Time and Priority Management Problem Solving	

Experience

Include specific experience that is important for the post holder to have in order to perform the role.

Essential	Desirable
Engineering Background	Experience in the Waste Industry Experience with Shredders, Shovels, Excavators & Conveyors.

Qualifications

Academic or professional qualifications that would be important to the performance of this role.

Essential	Desirable
NVQ Level 2 in Mechanical Maintenance	

Competencies

Other role specific behaviours or expertise that will give the job holder the ability to succeed and be efficient in this position.

Essential	Desirable
Pay attention to detail Willing to work at height Interest in engineering Ability to work alone or in a team	Ability to plan own work

Signed

Signed for and on behalf of Countrystyle Recycling Ltd		Date	26.10.2020
Signed by job holder		Date	