



Source



**NEW
CONTRACT
WINS**

London Borough of Bexley
awards RRC & WTS contract to
Countrystyle...

CONTINUED ON PG 4

COUNTRYSTYLE IN THE COMMUNITY

Kent Community Cricket Renews Partnership

With many plans in
development for the pupils of
Kent...

CONTINUED ON PG 10

IN THE SPOTLIGHT

Lights, Camera... Action!

Countrystyle is set to launch its
new corporate video...

CONTINUED ON PG 12

CONTENTS



- 3. From the Editor
- 4. London Borough of Bexley Signs with Countrystyle
- 5. MCG Education Joins School's Portfolio
- 6. New Spitalfields Market Contract Renewed
- 7. Investing in Change at our Ridham Site

- 8. Taking Fire Risk Seriously
- 9. Committing to Arjes Technology
- 10. In the Community
- 12. Lights, Camera...Action!
- 13. Our People
- 15. Join the Team

Have your say

EMAIL US AT:

source@countrystylerecycling.co.uk

OR SEND US A LETTER:

Source Magazine,
Countrystyle Recycling Ltd,
Ashford Road, Lenham,
Kent, ME17 2DL

T&Cs

Countrystyle cannot accept any responsibility for unsolicited contributions. No part of this magazine may be reproduced, stored in a retrieval system or transmitted without permission.

All articles are factual and accurate at time of publication.

From the Editor



Investing for the future

Following the successful commissioning and operation of our new waste plasterboard processing facility, we have invested further in our main Ridham Dock site through the installation of a dedicated Dry Mixed Recyclables MRF in our former IVC reception building (page 7).

Countrystyle is proud to announce that it has been awarded its first contract to manage a local authority's Reuse & Recycling Centres by the London Borough of Bexley, London's leading Borough for recycling for 13 consecutive years (page 4).

Countrystyle has also further extended its expertise and dominance in servicing the education sector in Kent, by being awarded the collection and recycling contract for over 86 schools in Medway Council's unitary area (page 5).

We also continue to be busy in the community and have renewed our partnership with Kent County Cricket Club (page 10).

Who are we...

As a leader in waste management and recycling for Kent and the South East, Countrystyle is the local solution for all waste related enquires. Capable of handling, processing, disposing and recycling almost all forms of waste, we pride ourselves on our strong landfill avoidance ethos.

Countrystyle's expanding flagship facility in Ridham, Sittingbourne, provides specialist services for the recycling/recovery of waste streams, including plasterboard, wood, dry mixed recyclables, food & green, construction & demolition waste. Our facilities at Ridham also process and manufacture Refuse Derived Fuel (RDF), ensuring 100% diversion from landfill.

For more information please see www.countrystylerecycling.co.uk



London's top recycling borough signs contract with Countrystyle for the management of its Reuse & Recycling Centres and Waste Transfer Station

Countrystyle is delighted to have been awarded the contract to operate the London Borough of Bexley's Reuse and Recycling Centres (RRC's) and Waste Transfer Station at Foots Cray, Sidcup and Thames Road, Erith.

Bexley is the leading London Borough for recycling and has held this position consecutively for 13 years. The five-year contract awarded to Countrystyle, valued at £1.7 million per year, is an exciting win for us, as this represents the first such contract to manage and operate RRC's for any local authority.

With experience in managing numerous other local authority Waste Transfer Sites, Countrystyle is well placed to meet the challenges ahead. Working closely with Bexley, new reuse & recycling initiatives have already been introduced.

Managing Director, Chris Howard commented: "It was a highly competitive tendering process

and we are thrilled to extend our working relationship with the London Borough of Bexley to really drive segregation, increase rebates, lower costs and educate the public about recycling and reuse."

Both of Bexley's RRC sites are integral in enabling the public to recycle a variety of waste streams. The Waste Transfer Station located at Thames Road accepts a wide range of materials from household kerbside collections, street cleaning, local trade and business waste.

Plans are underway to substantially increase efficiency, improve safety and maximise the flexibility of the Transfer Station. A key target is to increase revenue receipts for the Borough and reduce the burden on taxpayers.



Countrystyle heads to the 'top of the class' as MCG Education joins our Kent schools portfolio

After a competitive tendering process, MCG Education (previously known as the Medway Commercial Group/ Ocelot) has signed a three-year contract with Countrystyle, valued at circa £0.5m.

The contract is for the collection and treatment of general waste and dry mixed recycling (DMR) for over 86 Schools in the Medway Council unitary area, with key drivers to significantly increase landfill diversion rates, reduce general waste bin weights and encourage recycling.

Commenting on the acquisition, Countrystyle's Sales Director Jamie Houston said: "We are really excited to have MCG Education on board as we help Medway schools embrace the Countrystyle ethos of landfill avoidance, waste segregation and recycling. Kent is at the heart of what we do and this contract is a perfect match from a strategic and logistical perspective. Well located at Sittingbourne, Kent, we can proudly provide a quality and proactive service".

Schools also sign up to additional ad-hoc services, including food collections to avoid contamination in recycling and confidential waste collections to adhere to GDPR regulations.

Our popular iconic hexagonal bins and educational literature were also provided by Countrystyle to encourage students (and teachers!) to segregate effectively and drive recycling further.





Countrystyle renews New Spitalfields Market Contract

With over 140 tenants across 32 acres, New Spitalfields Market is the UK's premier horticultural wholesale market, owned and administered by The City of London Corporation.

Working with the City of London Corporation since 2010, Countrystyle quickly implemented waste segregation at the on-site recycling area. Over time, the relationship flourished and again, proving the best value via competitive tendering, Countrystyle was awarded the contract for a further 5 years until 2022.

Under the new contract, site cleanliness, health & safety and the principles of 'waste polluter pays' are key drivers. New projects implemented include the procurement of a MOBA dynamic weighing system for the on-site dustcart and platform scales, revolutionising how tenants account for individual costs and improve waste management practices.

Other projects include the reuse of lightweight pallets which were previously taken to Countrystyle's Ridham flagship facility for

shredding and recycling. Pallets are now collected by a small family-owned company who provide a small skilled workforce opportunities to repair pallets for reuse and resale. Blue CHEP pallets recovery rates have also significantly increased with the assistance and involvement of the CHEP asset recovery team and an appointed pallet collector within the market.

Focusing on the combined cleaning, waste collection, on-site segregation, recycling, ground maintenance and winter maintenance of the whole site, Spitalfields achieves a 100% landfill diversion rate through the combination of recycling & recovery.



Managing change at Ridham – Launch of our new Dry Mixed Recyclables (DMR) MRF



In 2008 Countrystyle Recycling opened the largest In-Vessel Composting (IVC) facility in the south of England, capable of processing 46,000 tonnes per annum of green food and co-mingled food & green wastes.

By 2017, the IVC Compost market had shifted such that a facility of that size was no longer economically viable. Ever adaptable, during the same period, the increased demand for the collection and processing of dry mixed recyclables (DMR) from trade waste customers, justified Countrystyle's decision to invest £1 million in a new DMR Materials Recycling Facility (MRF) which opened for business in 2018.

The DMR MRF accepts clean DMR from Countrystyle's trade customers across Kent and from third-party operators. The facility can process up to 40,000 tonnes per annum.

Recyclates are positively picked by dedicated teams, baled and transferred to reprocessors, including local paper and card mills. Countrystyle also sorts and bales source segregated single waste streams, such as printer paper/trim, plastic bottles, rigid plastic and cardboard.

Commenting on the investment, Head of Commercial, Becky Short said: "The concentration of paper, plastic and cardboard processing operations at our new DMR MRF has enabled Countrystyle to achieve economies of scale, increase DMR collections across our trade customers, reduce transportation between sites, fully internalise treatment and greatly improve our carbon footprint."



Taking Fire Risk Seriously

Countrystyle has successfully obtained EA approval for three separate Fire Prevention Plans in its wood, plasterboard and RDF / MRF facilities - a major achievement in an industry that is challenged by waste fires. This has only been obtained through hard work, investment and, most importantly, by taking fire risk seriously.

Working closely with our Property Insurer, Affiliated FM (a division of FM Global), Countrystyle has invested £250,000 into an automatic sprinkler system for our new DMR MRF which was supplied by FM approved fire solution experts, Thameside Fire.

Capable of delivering up to 6,000 litres per minute, the UK built, Armstrong diesel fire pump distributes 10.2 mm/min of water over the entire DMR MRF via 280 sprinkler nozzles and uses water from Countrystyle's dedicated 450,000 litre capacity water storage tank. To enable unprocessed recyclables and baled material to be stored in the six former IVC sanitation tunnels, each tunnel has been fitted with its own pipework and 20 x sprinkler heads, which operate via a separate control valve-set located in the main DMR MRF building.

Director of Compliance, Stuart Butler-Gallie, said "We experienced a fire within an external wood bunker some three years ago and understand first-hand the impact fire can have on our business. Since then we have invested heavily in technology and staff training to ensure we can proactively try and prevent or where not possible, quickly move to tackle fires that can arise when dealing with high volumes of waste as we do everyday."

Stuart added: "We are delighted to have worked collaboratively with our insurers, Affiliated FM, aided by our brokers, Marsh, so that all parties involved were confident Thameside Fire would deliver a system that worked for us. This new system can give confidence to a global company who understand fire risk and highlights Countrystyle's serious dedication to managing that risk".



Countrystyle commits again to Arjes Shredder technology

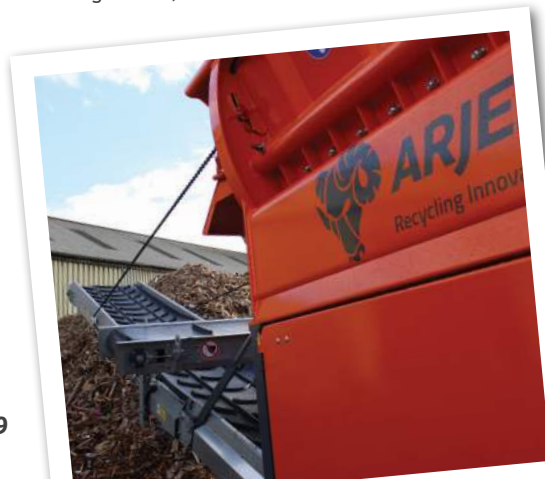
As part of Countrystyle Recycling's commitment to its waste wood recycling business, and as part of its company-wide plant replacement programme, we have taken delivery of a new Arjes VZ850DK tracked shredder to replace one of our two existing Arjes shredders used in our wood recycling operations.

In 2013, Countrystyle was the first UK waste operator to purchase an Arjes shredder and to apply the engineering skills of Herr Norbert Hammel in the processing of waste wood. The new shredder, supplied by Doyle Machinery Limited, is the fourth Arjes shredder purchased from Willie Doyle by Countrystyle and is clear evidence of our confidence and belief in the Arjes technology and the aftercare service provided.

Commenting on the recent acquisition, Grant Potts, Operations Manager (Wood) said: "the wood recycling team has been using Arjes shredders for five years and the technology has never failed us. The VZ850DK is easy to move, operate and maintain and, as part of our planned preventative maintenance regime

and by alternating between shredders, we can maximise throughput and shaft life."

The new Arjes VZ850DK will work alternately with Countrystyle's existing Arjes shredder at our fully bespoke permitted wood recycling facility at Ridham Sea Terminals, near Sittingbourne, Kent.



COUNTRYSTYLE IN THE COMMUNITY

Kent County Cricket Club Official Schools Partnership renewed

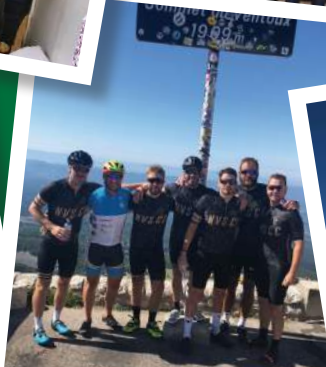
For a fourth successive year Countrystyle has renewed its status as the Official Schools Partner of Kent County Cricket Club. Continuously reflecting the academic curriculum, a new focus on the effects and benefits of recycling is at the forefront of our School's Initiative. Members from Countrystyle and Kent Cricket attend local Primary Schools across Kent with the objective of increasing recycling awareness – whilst engaging in the spirit of cricket. Commenting on the renewal, Head of Sales and Marketing, Sonya Cragg, said: "Countrystyle and Kent County Cricket Club can engage more pupils with the schools initiative. We strongly believe in landfill avoidance and teaching the benefits of recycling. The partnership has been a resounding success over the past four years and we are excited to see what the next three years have to offer, especially as Kent is set to return to the top-flight of English Cricket this season!"



Young artists welcomed to the Circular Economy

Countrystyle recently welcomed an eager group of young artists and entrepreneurs to Ridham to see the wealth of waste material available in the circular economy. Launched by non-traditional career skills developer, Future Foundry, the Circular Kent project draws on the Circular Economy principles and raises awareness of global issues regarding waste and resource depletion. They challenge artists to find creative solutions which are relevant to Kent communities.





IN THE SPOTLIGHT



Lights, Camera... Action!

Countrystyle prepares to launch its new corporate video which includes HD footage to demonstrate our increasing capabilities and place within the wider industry.

Reflecting industry changes and demands for Countrystyle's services, we have created a new corporate video designed to showcase our latest developments and service capabilities. The video also highlights Countrystyle's community work, including our highly successful Schools Initiative with Kent County Cricket Club.

Using footage filmed at several sites, including Bexley and Ridham, the new footage harmoniously links with the current video filmed in 2016. "The new video pieces

together Countrystyle's growth story since the original video's inception and demonstrates how far we've come in a short amount of time" commented Marketing Executive, Emily Geeson.

Working closely with Canterbury-based company, Epic Insights, the new footage was shot using the latest 4K video capture technology, including the use of a DJI Inspire 2 Drone, shooting in 6K, which captured Countrystyle in the context of its wider surrounding area.



OUR PEOPLE



Up-skilling our staff

In line with the new developments outlined in this edition of Source, Countrystyle has invested in its staff with up-skilling initiatives and training.

First on the Scene

Furthering our commitment to Health & Safety in the workplace, Countrystyle enrolled staff across all departments on an intensive first aid course run by the British Red Cross. The attendees had to demonstrate knowledge attained during the sessions and carry out manoeuvres including placing patients into the recovery position, performing CPR and correct bandage application.

Head of Health & Safety, Earl Chapman, commented: "The first aid course is a small but significant step towards enhancing Health and Safety practices at all of our sites. It is critical that we provide a safe working environment and with the nature of the business, there are always risks involved. The training is part of a wider plan for us to improve our sites, especially as we continue to grow and expand into handling new waste streams."

Driver Recognition

Three Countrystyle drivers from our Roll-On-Roll-Off (RoRo) department were put through their Class One HGV licence and passed with flying colours. Shaun Bailey, Martin McKirdy (both pictured below) and Thomas Williams are now fully qualified and assigned onto larger vehicles in Countrystyle's fleet of over 150 vehicles including Artic's and 'Wagon & Drags'.



OUR PEOPLE



Alec Barton

SENIOR SITE SUPERVISOR

Countrystyle's operations require vast amounts of teamwork and organisation. Luckily, Alec is on hand to ensure that everything operates smoothly.

Working in a variety of departments, Alec has seen it all! Before Countrystyle's inception, he worked on his days off at our sister company FGS Agri and joined as a driver for Countrystyle Composting in 2011.

Transitioning to a yard worker, Alec progressed to his current position as Senior Site Supervisor at Ridham, where he ensures operations run efficiently by "controlling" the main yard.

It's all hands on deck for Alec, as over 100 Lorries arrive at Ridham every day. His responsibilities include, (but are not limited

to!) managing the traffic entering/leaving the site, ensuring the correct waste is discharged or loaded in accordance with our waste specifications and the site's permitted EWC codes and overseeing staff around the site.

Speaking to Source, Alec commented: "I love my job and the variety it brings every day. One day I am liaising with departments, arranging plant and waste or guiding a hawk to chase seagulls away! When I started, Countrystyle only had two lorries and eight people in the yard. The company continues to expand and every day I'm learning something new – especially with the ever expanding facilities the company has invested in at Ridham".

JOIN OUR TEAM

These are exciting times for Countrystyle. We are a fast growing and successful company that continues to heavily invest in our infrastructure and future.



We employ over 300 people including receptionists, HGV drivers, fleet planners and more. We are always on the lookout for enthusiastic and passionate individuals to join our team.

View our latest vacancies at:

www.countrystylerecycling.co.uk

*It could
be you!*

CONNECT WITH US ON SOCIAL MEDIA

For our latest news, follow us on:



#HASHTAG
TWEET,
LIKE
FOLLOW

OUR SISTER COMPANIES



FGS Organics develop specialist recycling solutions for the agricultural sector including the use of gypsum nuggets and paper crumble. FGS pride themselves in the quality of service and information that they provide to all their customers, from supplying artificial fertilisers through to alternative livestock bedding. Product development is one of FGS's strengths, whether it is developing alternative markets for products or creating bespoke application methods to ensure the best application technologies are used.

For more information visit
www.fgsorganics.co.uk or call 01233 820055.



FGS Plant now offer a complete refurbishment service for all agricultural and construction plant and associated equipment including the following:

- Full Strip & Re-Build
- Total Fabrication inc Welding
- Adaption and Modification
- Shot Blasting
- Paint Spraying

For more information visit
www.fgsplant.co.uk or call 01622 713930.



FGS Agri Ltd is a leading Kent based agricultural contracting business, offering an array of agricultural services throughout the South East.

For more information visit
www.fgsagri.co.uk or call 01233 820055.



Water Direct specialises in the provision of quality assured drinking water, for wherever and whenever a piped water supply is either unavailable, unusable or inadequate. In addition to being the preferred water supplier to many of the UK's water utility companies, Water Direct has also become the country's leading provider of bulk and temporary water supply systems to many construction companies and festival organisers.

For more information visit
www.water-direct.co.uk or call 0345 345 1725.



Envar Composting Ltd specialises in organic waste treatment and market/product development. Based in Cambridgeshire.

For more information visit
www.envar.co.uk or call 01487 849840.